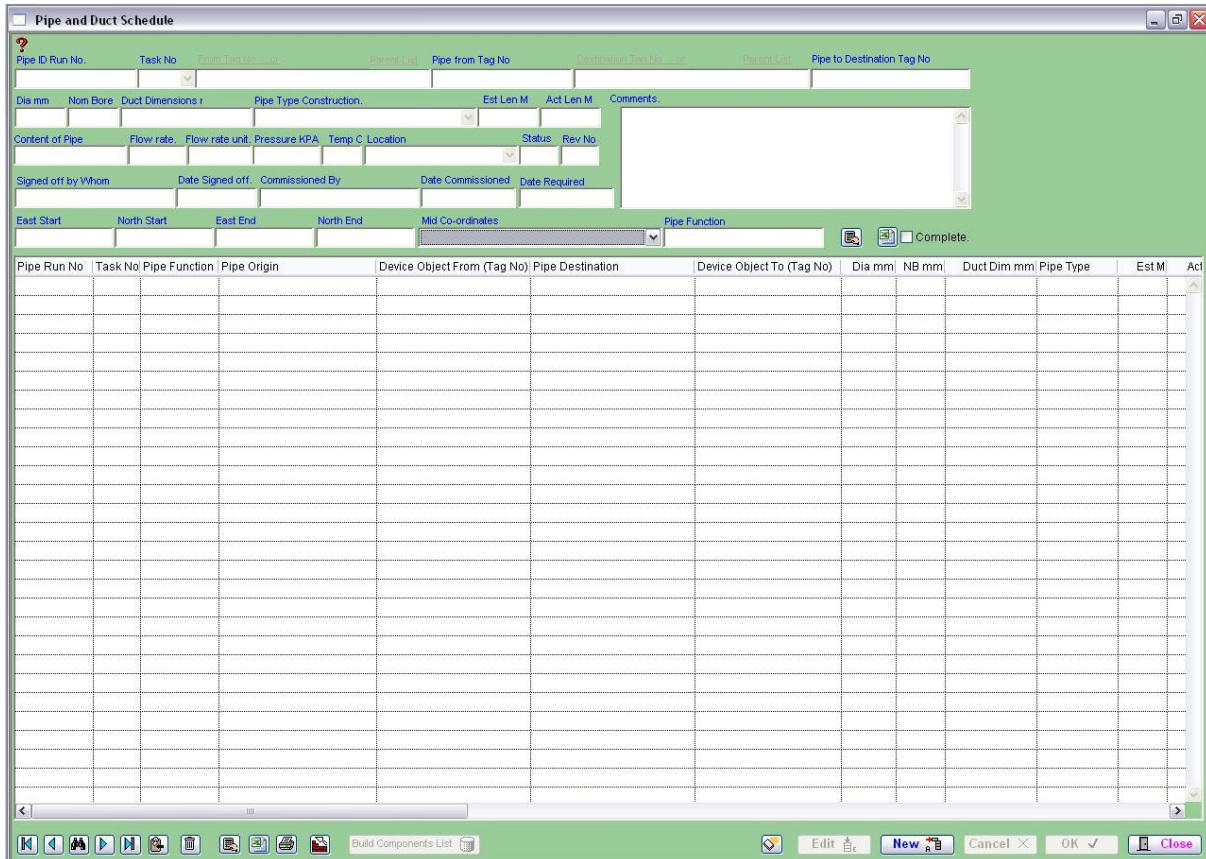


Category 2

2.1 Pipes and Ducts Schedule



This window provides you all the pipes and ducts that you put in the project. This also shows the destinations and device objects of those pipes and ducts.



This button will export table into other Projects.



Total of selected lines of cable Estimated and Actual lengths.



Prints selected lines into a Excel spread sheet with extra information.



Prints the selected lines. A right mouse click produces a Excel spread sheet with extra information.



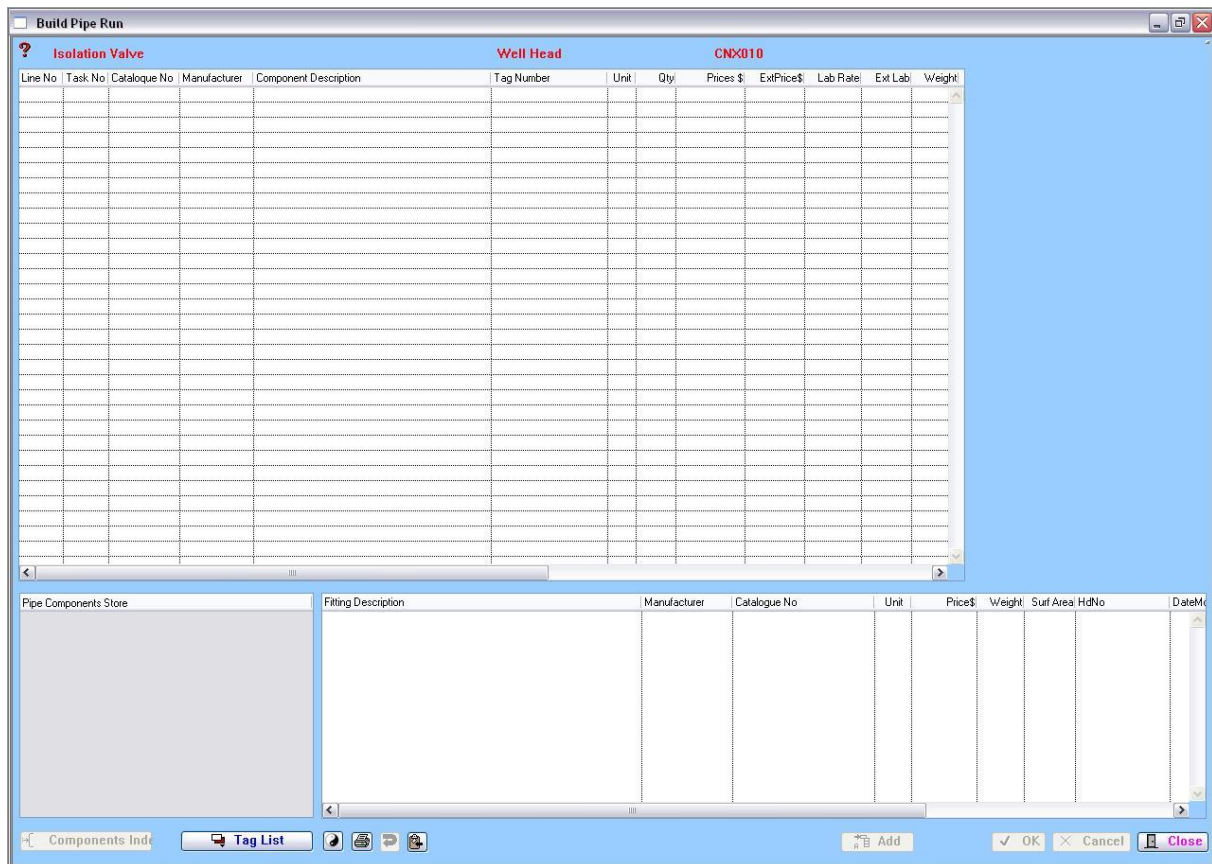
Rebuilds current pipe list. A right mouse click builds all pipes including ones on hold.



Deletes selected lines from list. This does not delete the information, this allows you work with a smaller list. A right mouse will clear the whole list.



This button will help you to open the “Build Pipe Run” which is shown below.



This button switches the index used for finding information in the equipment list (tag numbers). This allows for equipment items to added to components list.



This is used to re-organise the lines in the componets table. To use selected lines from table and click on this button, the lines will dissapear. When arrows appear, select the insertion point in table, click on the button, this re-writes the datafile and re orders line order. Right click to abort operation.



Prints the selected lines. A right mouse click produces a Excel spread sheet with extra information.



Imports a copied Table, that has been copied into mememory into current Loop Number. The data stored in mememory can used many times to copy into other loops or between other projects no checking is done to varify data in other projects. Current task No is used.



Exports the selected lines into a area of memory. This can be used to copy into another Pipe Loop No in the same project or into another project. To clear memory do a right click on this button.